

**Shock Wave Treatment For Urological Pain Therapy  
And Erectile Dysfunction**





**2x**

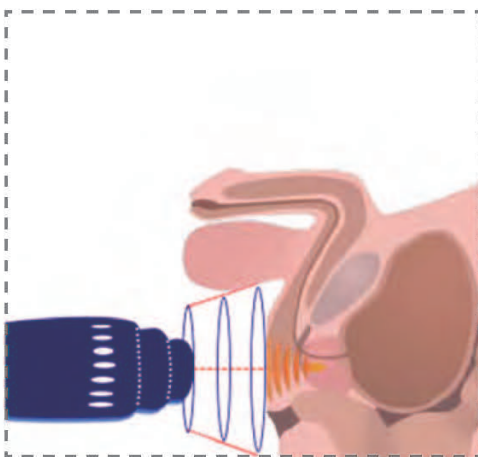
## Shock wave treatment for urological pain therapy and erectile dysfunction

DUOLITH® SD1 is an effective and long-term treatment for Chronic Pelvic Pain Syndrome (CPPS), Induratio Penis Plastica (IPP) and Erectile Dysfunction (ED) of vascular origin. Scientific studies have proven the effectiveness of focused shock waves for these indications.

The effectiveness of this modern shock wave equipment is determined by the individually selectable, dynamic and powerful energy range and the therapeutic depth of focus that can be chosen. Deep-lying areas can be treated easily, with large focus zone making it easy to access these areas with a high degree of accuracy.

### Urological pain therapy

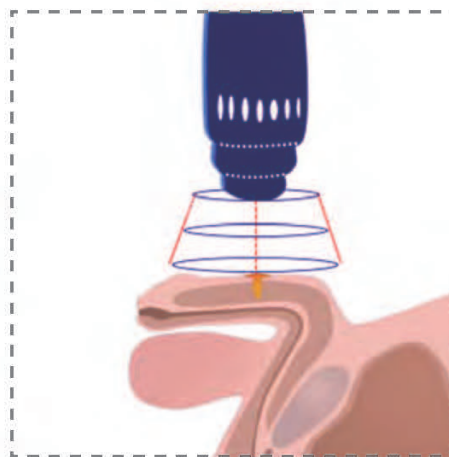
#### CPPS



#### Significant improvement of

- Pain
- Urination conditions
- Erectile function

#### IPP



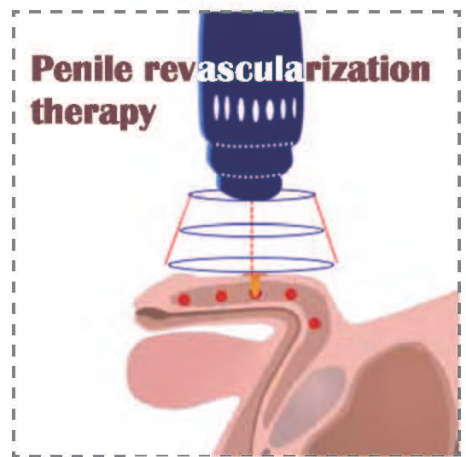
#### Significant improvement of

- Pain

#### Stabilisation in advancement of

- Penis curvature
- Plaque formation

#### ED



#### Penile revascularization therapy

#### Significant improvement of

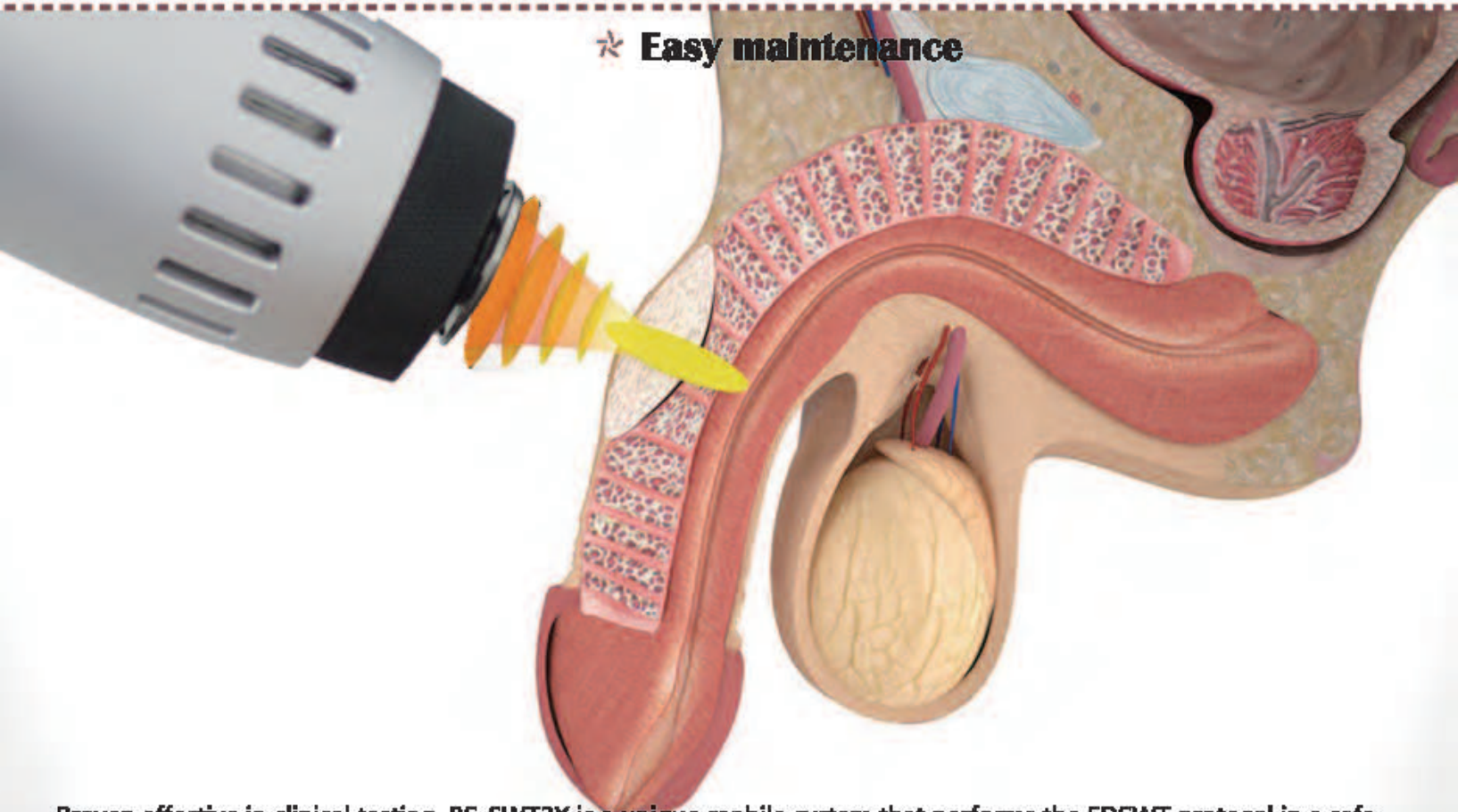
- Sexual function



# ☆ Features



- ☆ **No downtime after treatment**
- ☆ **Easy to operate**
- ☆ **Flexible settings**
- ☆ **Rich transmitters**
- ☆ **Noninvasive treatment**
- ☆ **Visible results**
- ☆ **Easy to track treatment history**
- ☆ **Vivid help menu with treatment suggestion**
- ☆ **Long lifespan handpiece**
- ☆ **Easy maintenance**



Proven effective in clinical testing, BS-SWT2X is a unique mobile system that performs the EDSWT protocol in a safe, efficient manner. Vasculogenic and diabetic ED patients, who are responsive to PDE5 inhibitors as well as those who are unresponsive, can receive shock wave therapy and experience improved erectile functionality. The system is light-weighted, modular and mobile.

# specification

Specification	Value
Shockwave Type	Radial
Therapeutic penetration depth	30 -45mm
Effects	Skin/Muscle
Energy	30mJ - 185mJ (0.5Bar to 5Bar)
Frequency	1 - 22Hz
Pulse Mode	Continuous or Burst
Transmitter	5 for different applications
Encyclopedia	Live Help with pre-set parameters
Treatment Protocols	30 + 8 preset protocols
Customer Profile Management	Yes
User Defined Settings	Yes
Multi-Language	Yes
Conformity	EN60601-1-2, EN61000-3-2/3, EN60601-1 :2006

## LUMSAIL INDUSTRIAL INC.

Sincery International Limited

Address: Rm1903, Silver Tower, No.138, Pingxingguan Road, Shanghai City, China

Address: 4/F, No.9, Lane 2, Suid Road, Putuo District, Shanghai, China

Fax: 0086-21-62528275 Tel: 0086-21-62528276

Web: <http://www.sincery.com> Mail: [info@sincery.com](mailto:info@sincery.com)

A product supplied by Sincery International Limited

© Mar, 2014, Sincery International Limited. All rights reserved. Product specification is subject to change without notice.